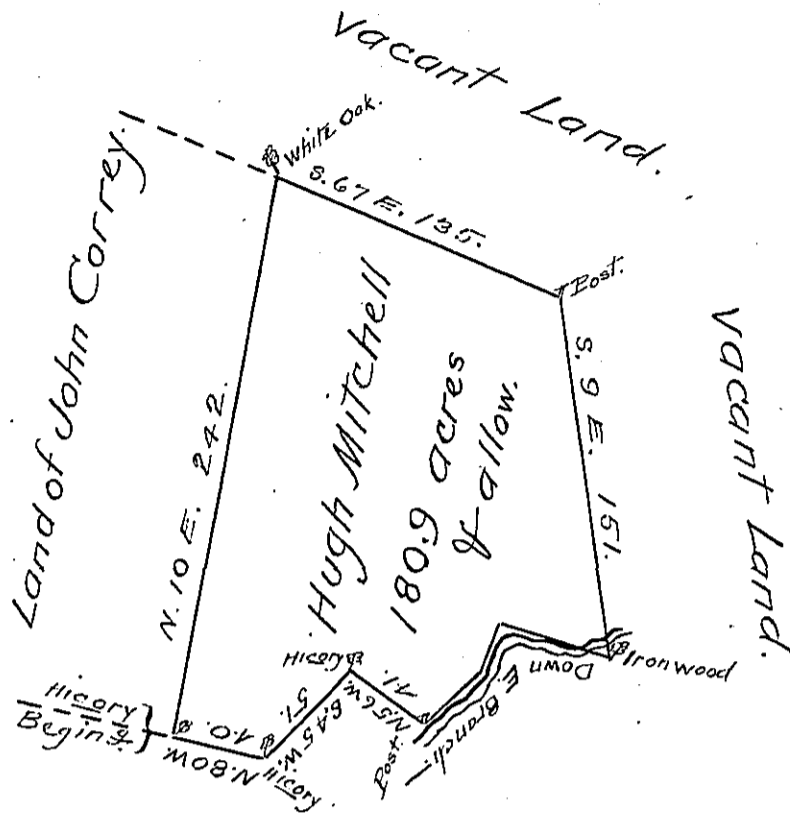


Courses and Distances }
 Down ye-Branch — }
 N. 73 W. 50 -
 S. 20 W. 24 -
 S. 48 W. 33 -

 107 -



The Draught of a Tract of Land called _____
 Situate on the East Branch of the Standing Stone
 Creek in the County of Cumberland containing
 One Hundred Eighty Acres One hundred Fifty Eight
 Perches with the usual allow. of six acres & Cent.
 for Roads. Survey'd the 20th day of November
 Anno Dom: 1766 In Pursuance of an Order of-
 Survey to Hugh Mitchell No 1510 Bearing Date
 at Philad^a the 11th day of October Anno Dom. 1766.

To John Lukens Esq. }
 S.G. of Pennsylvania } W^m. Maclay D.S.

IN TESTIMONY that the above is a copy of the original remaining on file in
 the Department of Internal Affairs of Pennsylvania, made
 conformably to an Act of Assembly approved the 16th day of
 February, 1833, I have hereunto set my Hand and caused
 the Seal of said Department to be affixed at Harrisburg,
 this fifth day of March 1906.

George P. Brown
 Secretary of Internal Affairs.